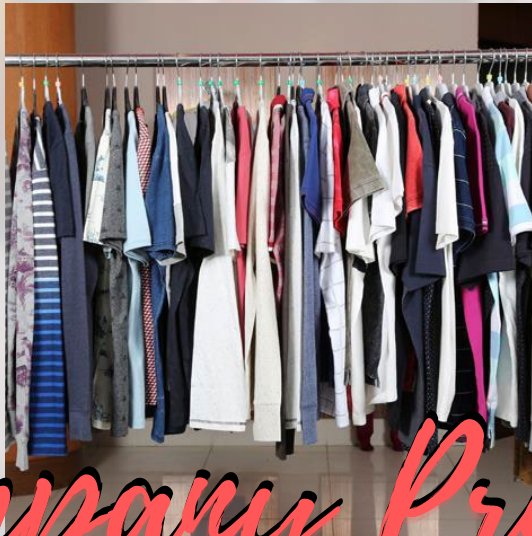
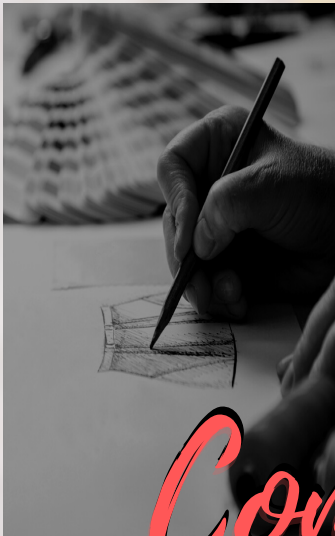




# H/E-INTERNATIONAL



## *Company Profile*

H/E-INTERNATIONAL

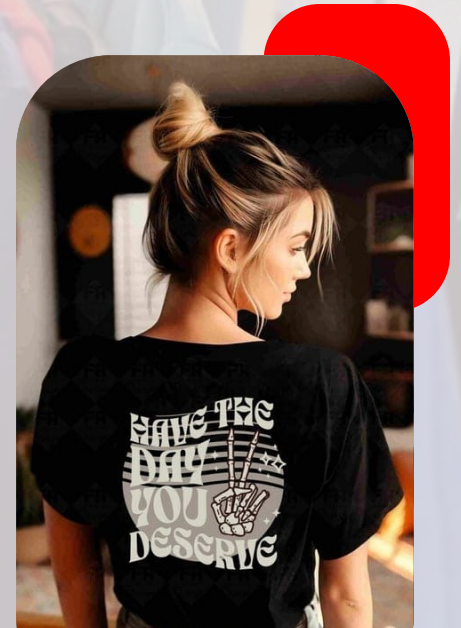


# Company Overview

H/E-INTERNATIONAL . is one of the successful garment manufacturers in the Bangladesh RMG industry in terms of efficiency and quality. Bangladesh is a country with great potential in the field of garment manufacturing. We provide the highest value products and services possible to our customers. We seek to cultivate long term relationships with our business partners and provide the utmost benefits & opportunities to our employees. Being one of the front-line clothing suppliers in the RMG sector in Bangladesh we assure the perfect blend of quality, efficiency & commitment.

H/E-INTERNATIONAL is crossing the way with achievement, aiming to lead the competitive woven-wear or industry in Bangladesh. To extend our position as a world class-manufacturer, we strive to achieve global standards in quality, cost management, service and scale of operations. We focus on innovative ideas, technologies & machines to manufacture the finest & highest quality products at a reasonable cost.

H/E-INTERNATIONAL has expanded its capacity, developed a skilled workforce and introduced integrated technologies to remain globally up-to-date. It is truly an organization with a glorious past and a bright future





## Our Mission

---

To focus on customers need and wants continuously and manufacture high standard quality Knit apparels. To establish ourselves as the world renowned Knit manufacturer by serving the international market. To strive to meet challenging market needs through a closer working relationship with business partners, innovative manufacturing process and maintain standard customer service.

## Our Vision

---

To maximize synergistic benefit and become a world renowned Knit Garments Manufacturer through the pursuit of high quality Productivity with advanced technology innovation and absolute customer satisfaction by leveraging on the strength of our core business.



# Machineries

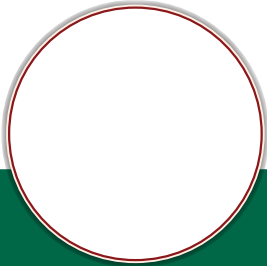
FLOOR SPACE

: 38,000 SQFT.

MACHINE LINE: 12 NOS

DESCRIPTION	UNIT	UNIT	BRAND	ORIGIN
Plain Machine		70 Set	Juki/Siruba	Japan/Taiwan
Plain Machine Two Needle		04 Set	Siruba	Taiwan
Over Lock		45 Set	Juki/Siruba	Japan/Taiwan
Flat Lock (Flat Bed)		07 Set	Juki/Siruba	Japan/Taiwan
Flat Lock (Cylinder Bed)		10 Set	Juki/Siruba	Japan/Taiwan
Snap Button		02 Set	Paradise	Bangladesh
Button Hole Stitch		02Set	Juki	Japan
Button Stitch		02 Set	Juki	Japan
Kansai		03 Set	Siruba	Taiwan
Fit of the Arm		02 Set	Siruba	Taiwan
Bar Tack		02 Set	Siruba	Taiwan
Rib Cuter		02 Set	Idea	Taiwan
Cutting Machine (10 Inch)		02 Set	KM	Japan
Thread Sucker Machine		02 Set	Local	Bangladesh
Metal detector machine		01 set	Winda	China
High Speed Interlock Stitch		04 Set	Zusun	China
Flatbed Interlock Stitch		04 Set	Zusun	China
STAND BY GENERATOR		02 Set		
VACUUM TABLE + STEAM IRON		02 Set	17 SETS.	Bangladesh
Recon Machine		03Set	Jack	
<b>TOTAL QTY &gt;&gt;&gt;&gt;&gt;</b>		<b>171NOS</b>		

# Top Management



**Aishath EeLaaf Hassan**  
Chairman

+8801717827005  
Hassan9882009@gmail.com



**Hasan Ahmed**  
Proprietor

+8801979-792009  
hassan9882009@gmail.com



**Mazharul Islam**  
Director

+8801881-194320  
mazharul.jamil@gmail.com



**Borhan Uddin Rintu**

Gm of Marketing & Production

+8801776-299171  
borhanw23@gmail.com



**Md. Moshir Rahman**

Director ( Marketing & Merchandising)

+8801722336741  
moshiur@zareenintl.com



## Conference Room

A well-equipped garment industry conference room typically includes seating, a conference table, audio visual equipment, display areas for product samples, and potentially a digital white-board or projector for presentations. It's designed to facilitate meetings, presentations, and collaborative work within the garment industry

## Sewing Floor (TOPS)

The sewing section is the main department in the garments manufacturing industry. After completing the garment cutting, all the cutting parts are received in the sewing department. In this department, different parts are joined together with the help of varying sewing machines, threads. To complete the garment efficiently and in a timely manner, the floor in charge of the sewing maintains a working procedure is also known as the process flow chart of the sewing department in the garments industry. We present the Process Sequence of the Sewing Department in the factory.



## Sewing Floor ( BOTTOMS)

- Garments Analysis, QC file and Raw Material Receiving
- Target setup for production Planning (On the basis of shipment schedule)
- TS etup Machine Layout as per Operation Breakdown
- Quality control of product



- Line Balancing to control WIP and remove bottlenecks.
- Line Setup (Advance or normal)
- Garment parts are received from the cutting dept.
- All the garment parts are stored/ racked carefully.
- Garment cutting parts distribution to the operator and helper



# Cutting Floor

- The dimension of the pattern and the cut piece
- Cut edge should be smooth and clean
- Notch should be cut finely
- Drill hole should be made at proper place
- No yarn fraying should occur at cut edge
- Avoid blade deflection
- Maintain cutting angle
- More skilled operator using
- 



# Iron Floor

Dedicated Iron Floor for High-Quality Finishing  
Our facility includes a well-organized, spacious iron floor specifically designed for garment pressing and finishing. This section is equipped with Industrial steam irons for precise temperature control, Vacuum pressing tables to ensure smooth and crisp finishes, Proper ventilation and safety systems to maintain a comfortable and compliant working environment with trained ironing personnel.







## Sample Section

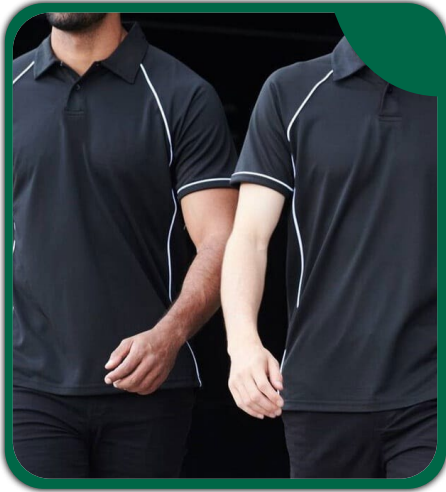
A garment sample section is a crucial area within a garment factory, responsible for creating prototypes and samples of garments for various purposes. The section's primary function is to bring designs to life, allowing for evaluation of fit, quality, and appearance before mass production begins. Key activities include creating different types of samples, such as fit samples, size set samples

## Finishing Floor

- Use of (Juki, Japan) servo motor machinery
- Electric Line in all areas for safe operation



# T-Shirts





# T-Shirts





# Pants





# Pants



# Kids Dress







# H/E-INTERNATIONAL

mazharul.jamil@gmail.com

## Contact us

---

☎ 01717827005

☎ +9609882009

☎ 01881194320

✉ mazharul.jamil@gmail.com

✉ Hassan9882009@gmail.com

